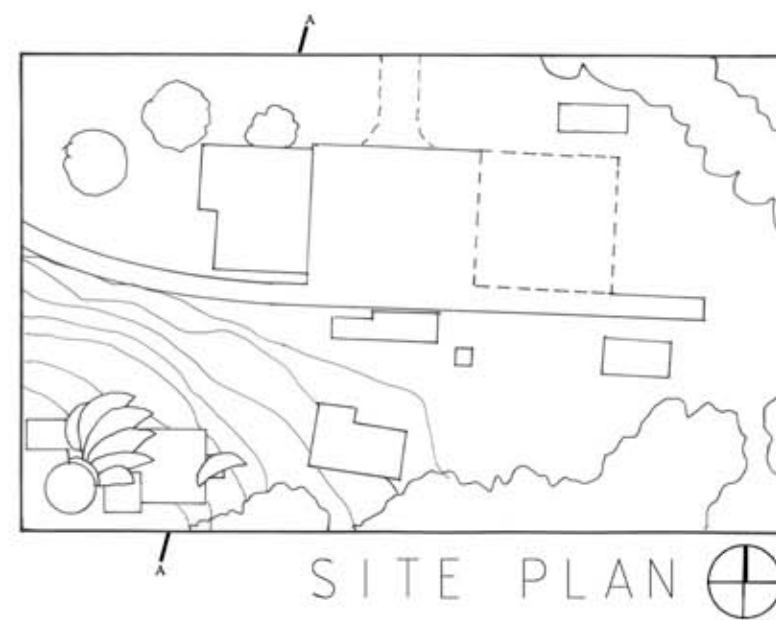
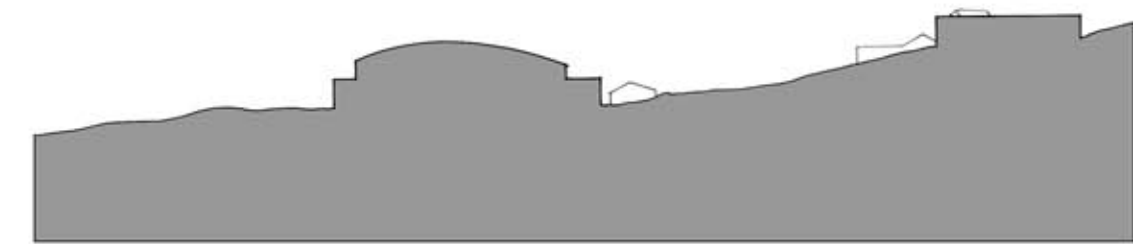




Tuskegee Army Interpretive Center



SITE PLAN



SITE SECTION AA

The site at Moton Field has tremendous potential in that it is free of distractions, set on a scenic hill, and in the beautiful Alabama weather. This design flows down the hill and overlooks the historical field. The large curve-linear planes turn the roof into a sort of radical metallic airplane form that glistens in the sun. A fairly linear organization leads guests from the entrance straight through to the airfield. The lobby is a memorial of sorts naming the spectacular airmen of Moton Field on its circular walls. The lobby is open to the sky where an expressionistic twirling form floats gently in the sky. The exhibition, film room, and interactive room, cafe and bookstore all lie along the circulation axis as blissful distractions.

